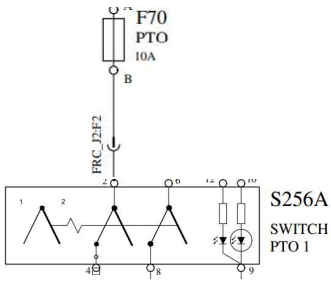
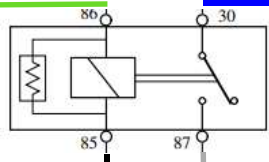


Cummins PTO wiring With 2500 Allison Options 4 and 5

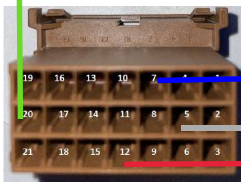


One Leg to Relay and the other to Cavity 20 Wire N130CM



To Cavity 7 Wire N162

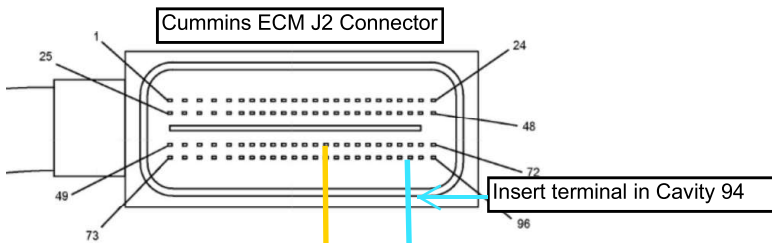
Allison BB Connector



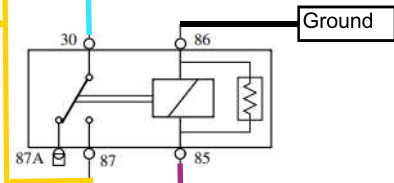
To a Good Ground

To Cavity 5 Wire N103

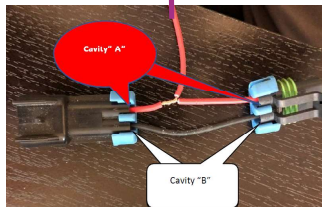
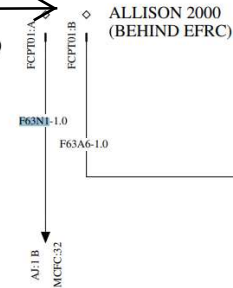
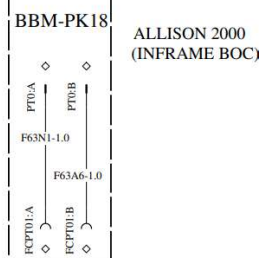
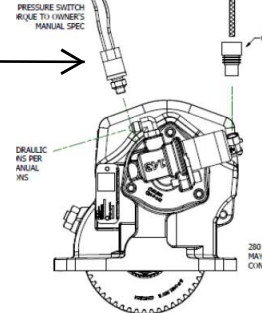
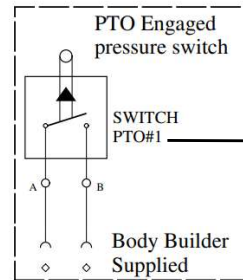
From Cavity 12 To PTO Solenoid



Splice in with Cavity 62



Plug PTO pressure switch into the PTO Connector in the left frame rail near PTO



Plug Jumper into the PTO harness Connector labeled PTO located behind the EFR